

FORTRA

Sequel

Installation Guide

Copyright Terms and Conditions

Copyright © Fortra, LLC and its group of companies. All trademarks and registered trademarks are the property of their respective owners.

The content in this document is protected by the Copyright Laws of the United States of America and other countries worldwide. The unauthorized use and/or duplication of this material without express and written permission from Fortra is strictly prohibited. Excerpts and links may be used, provided that full and clear credit is given to Fortra with appropriate and specific direction to the original content.

202310171001

Table of Contents

Before You Begin	4
Software Requirements and Notes	4
Sequel Installation Overview	5
Preparing to Update Sequel	7
Installing Sequel	8
Installing Viewpoint (for users)	12
Before You Begin	12
Installing ACS Windows Application Package	13
Installing Viewpoint	16
After You Are Done	17

Before You Begin

Read this section before installing Sequel.

Software Requirements and Notes

- Your operating system level must be at IBM i 7.3 or higher.
- If system value QALWUSRDMN 'Allow user domain objects in libraries' is set with a restricted list of libraries, the following libraries should be added: SEQUEL, SEQUELEX, ESEND, SEQUELWI, and any library used for Sequel objects.
- Sequel installs only into *SYSBAS—the primary asp. The programs cannot be moved into the IASP. The programs cannot be run in an iASP. If you move database files from the SEQUEL library to an iASP, you cannot use Auditing. The user profile used during a product installation/upgrade cannot have an Initial ASP associated with it.
- Sequel cannot be installed into more than one library; therefore, making a copy of the product libraries is not a good backup strategy as this will cause the upgrade(s) to fail. Saves must be done to a save file, tape, or using SAVOBJIFS.
- The appropriate JDK toolkit, at the most current level on the IBM i is required:

Description	IBM i 7.5	IBM i 7.4	IBM i 7.3	IBM i 7.2
IBM Toolbox for Java	N/A	N/A	N/A	N/A
IBM Developer Kit for Java	5770JV1 *BASE	5770JV1 *BASE	5770JV1 *BASE	5770JV1 *BASE
Java 8 IBM Technology (32 bit) or	5770JV1 option 16	5770JV1 option 16	5770JV1 option 16	5770JV1 option 16
Java 8 IBM Technology (64-bit)	5770JV1 option 17	5770JV1 option 17	5770JV1 option 17	5770JV1 option 17
Extended Base Directory Support	5770SS1 option 3	5770SS1 option 3	5770SS1 option 3	5770SS1 option 3

Description	IBM i 7.5	IBM i 7.4	IBM i 7.3	IBM i 7.2
Portable App Solutions Environment (PASE) ¹	5770SS1 option 33	5770SS1 option 33	5770SS1 option 33	5770SS1 option 33

1. To verify PASE is installed, type **GO LICPGM**, choose option 10 and look for the entry *Portable App Solutions Environment*. If you do not have PASE installed, install it using your IBM i SS1 installation media.

Sequel Installation Overview

The products you need to download, install, and configure are different for a Sequel-only install vs. a Sequel and Deployment Bundle install, and whether you are performing a First-time/Trial install or an Upgrade.

This matrix outlines the software required, and the install steps to follow for a given install type/environment combination.

	Sequel and Deployment Bundle	Sequel Only
First-time / Trial Install	Download: HelpSystems Product Installer (includes host software and product manuals) Unified Server Crystal Reports 2011 (for Client Reports) Viewpoint Client	Download: HelpSystems Product Installer (includes host software and product manuals) Crystal Reports 2011 (for Client Reports) Viewpoint Client Sequel Web Server (optional)
	Install: (in this order) Unified Server (separate document) HelpSystems Product Installer (launches the Product Loader to install Host Software) Crystal Reports 2011 (for Client Reports) Viewpoint Client	Install: (in this order) HelpSystems Product Installer (launches the Product Loader to install Host Software) Crystal Reports 2011 (for Client Reports) Viewpoint Client Sequel Web Server (optional) Viewpoint Listener (optional)

	Sequel and Deployment Bundle	Sequel Only
Upgrade (from version 10.0. & higher)	Download: HelpSystems Product Installer (includes host software and product manuals) Unified Server Viewpoint Client	Download: HelpSystems Product Installer (includes host software and product manuals) Viewpoint Client Sequel Web Server (optional)
	Install: Unified Server (separate document) HelpSystems Product Installer (launches the Product Loader to install Host Software) Viewpoint Client	Install: HelpSystems Product Installer (launches the Product Loader to install Host Software) Viewpoint Client Sequel Web Server (optional) Viewpoint Listener

Preparing to Update Sequel

If you are installing Sequel for the first time, skip to the section below titled '[Installing Sequel](#)'. If you are a current Sequel user and are updating Sequel:

- Review the **ReadMe** document for changes that may affect your environment. This document is part of the Instruction Package available via the 'Download the Product Instruction Package' link on the download page.
- Make sure that there are no users in any Sequel menus and displays, no Sequel jobs running in batch, and there are no active Viewpoint jobs.
- If you are updating from Sequel 8.7.235 or higher, the installation program preserves your existing authorization code. If your current version is less than 8.7.235, you must obtain a new authorization code from HelpSystems.
- If your system value for 'DBCS Version Installed Indicator' (QIGC) is set as installed (1), the Sequel and Esend printer files will be set to IGCDATA(*YES). If this is not desirable, refer to the CHGSEQIGC command in the KBA titled, [Support Utilities Included with Sequel](#).

Before you Install

Notes

- If installing Sequel along with Sequel Web Interface and Automate Schedule (First-time / Trial), it is very important that the Unified Server components are installed with only the Automate server being configured before installing the host software.
- If you currently use Sequel 10.0 or higher, and are only upgrading the host software, or if you are not installing the Deployment Bundle, you can skip the Unified Server install process (overview step 1 below) and perform the items listed in overview step 2 below. Follow overview step 3 if you currently use Sequel Web Interface.

Overview

The overall installation and configuration process requires the following steps:

1. Referring to the *Unified Server Installation Instructions* ([unified server installation.pdf](#)) included with the product download:
 - Complete all the Unified Server installation steps.
 - Complete the configuration steps for the Automate Schedule server **only**.
2. Continue with the remaining steps in this document:
 - Installing Sequel to install or upgrade Sequel on the IBM i and apply any required license keys.
 - Install Viewpoint only (for users/non-Client Report designers).
 - Install Crystal Reports and Viewpoint (for users/Client Report designers)
3. Return to the *Unified Server Installation Instructions* and complete the unified server configuration steps for the **Sequel Web Server** and the **Viewpoint Server**.

Installing Sequel

Follow these instructions to install Fortra's Sequel using the Fortra Product Loader (the installation process automatically installs Sequel into the default library **SEQUEL** on the IBM i). This process downloads everything to your PC and loads the objects on the IBM i.

NOTE:

For general information about the Fortra Product Loader, see [Using the Fortra Product Loader](#) on our website.

1. Download the Fortra Sequel installer (**setupSequel11.exe**) from [Your Account](#) page on our website. Double-click it to start.

2. On the Choose Components panel, select which components you want to install. You can choose to install the Manuals and/or the Software for IBM i. Click **Start** to continue. The installer will extract files to your PC and launch the Sequel Product Loader in a secondary window.

NOTE:

If you select the Manuals component, they will be installed in the following location:
C:\Program Files (x86)\SEQUEL\SEQUEL\manuals

3. On the IBM i Details panel:
 - a. Select or enter the IBM i where you want to load Sequel.
 - b. Enter a user profile and password that is a member of the user class *SECOFR and has at least the following special authorities: *ALLOBJ, *SECADM, *JOBCTL, and *IOSYSCFG. The user profile should have Limit capabilities set to *NO. This profile will be used to restore and copy objects, and for product maintenance on the IBM i.
 - c. (Optional) In the Advanced Settings section:
 - Enter a port number or use the arrows if you want to change the FTP port number to something other than the default of 21.
 - Select **Secure File Transfer** if you want to use FTPS (FTP over SSL) during the file transfer. The default FTPS secure port is 990, but it can be changed to the required secure port for your environment.
 - In the **Timeout (seconds)** field, enter the number of seconds the session should be kept active during an FTP transfer. You can choose anywhere between 25 and 1800 seconds (30 minutes).

NOTE:

If the transfer takes longer than the amount of time specified, the session will expire.

- d. Click **Next**.
4. You have two options on the Product Load Options panel:
 - a. Click **Immediate Load** to load the product on the IBM i now.
 - b. Click **Staged Load** to transfer the objects now and load them on the IBM i at a later time.

NOTE:

See [Loading Staged Objects on the IBM i](#) below for instructions on how to load the staged objects on your selected IBM i system.

5. The Product Load Progress panel for Sequel launches. When the processing is complete, you have two choices:

- If this is the only installation of Sequel you are performing, click **Finish**.
- If you have more installations on other IBM i systems, click **Restart**. Then, return to [step 3](#).

NOTE:

If the Product Load Progress panel ends with an overall Failed message, the product upload could not complete properly. To find the reason the upload or install failed, click **View Logs** and review your logs. You can also use **Download** at the top of the logs to save the information for future review.

Loading Staged Objects on the IBM i

If you chose to stage your objects using [step 4b of the installation or update process](#), do the following to manually load them on the IBM i you identified above.

1. At a command line, enter the following to display the Work with Loads panel:
HSLOADMGR/HSWRKLOAD
2. Place one of the following options next to the Load Name for Sequel and press **Enter**:
 - Option **1** if you are installing Automate Schedule, or overriding any install defaults. (recommended in most situations)
 - Option **8** if you want to copy the Load command for use in a job scheduler or to submit the load now. (not recommended)
 - Option **2** does not apply to Sequel as a pre-check is not required.
 - Option **4** to delete the save file associated with the product.

Esend will always be included as part of a new install or update of Sequel. For first-time Sequel installs you will have the option to not include the Sequel Web Interface and the Viewpoint Repository. If SWI or the Repository already exist on the system, they will always be included as part of an update of Sequel.

3. After a series of status messages, the Sequel Installation panel displays. This install panel is used for both first time installation or updating your existing version.

```

9/03/                               SEQUEL Installation                               HS44
17:41:11

Install interactively or in batch
Submit . . . . .  Run Interactively
                   Submit to Lib/Jobd:   *LIBL_____ / QBATCH_____

SEQUEL product library . . . . SEQUEL_____
SEQUEL Web Interface library . SEQUELWI_____
ESEND product library . . . . ESEND_____
Automate Schedule library . . . SKYAGENT_____ Port#: _____
Automate Schedule server . . . _____

Report title information:
Company Name: _____

F3=Exit   F5=Refresh

```

Specify the installation options you want to use, and press **Enter**:

Install interactively or in batch- Select one of the following:

Run Interactively - This is the default.

Submit to Lib/Jobd - Submit the install as a batch job. Enter the library and job description to run the install in batch.

Sequel Product library - Enter the name of the library where you want to install Sequel. SEQUEL is the default.

Sequel Web Interface Product library - Enter the name of the library where you want to install Sequel Web Interface. Use the default, SEQUELWI.

Esend Product library - Enter the name of the library where you want to install Esend. Use the default ESEND.

Automate Schedule Library and Port - If you did not install the Unified Server enter *NONE to skip Automate Schedule installation. If the Unified Server is installed enter SKYAGENT for the library and 7481 for the port number.

Automate Schedule Server - Enter the IP address for the server Automate Schedule was installed onto. If you are not installing the Unified Server, leave this value blank. **For Upgrades:** Enter the Automate Schedule server IP address and port number to ensure the IBM i Agent is upgraded on the Automate Schedule server.

Report Title Information - Enter your company name here. This will populate the default company name value for the Sequel host Report Writer. This option is not available during an upgrade.

4. When the installation completes a screen displays showing the products installed. Be sure to apply all Sequel license keys at this time.

Delete this text and replace it with your own content.

Installing Viewpoint (for users)

Before You Begin

Read this section before you install Viewpoint.

Software Requirements and Notes

Viewpoint Client

- A PC with at least 2GB of RAM, 250Mb of available disk space, a Pentium (or equivalent) processor, graphics resolution of 800 x 600 or higher along with the following:
- 64-bit Windows 8/8.1 Professional with Service Pack 3 or higher or Windows Server 2012/2012 R2/2016 with:
 - IBM i (System i, iSeries, Client) Access for Windows version V6R1 service pack SI35607 (or higher), or V7R1 service pack SI53809 (or higher) with the following installed components:
 - Client Access Express Required Programs.
 - iSeries Navigator Base Support (an option under iSeries Navigator).
 - Commands Component (an option under iSeries Navigator - for prompting commands in the script designer).
 - OLE DB Provider (an option under Data Access).

To verify these components are installed, go to: **Start\Programs\IBM iSeries Access for Windows>Selective Setup**.

- a. On the Selective Setup window, press **Next**.
 - b. On the Selective Setup Options window, select **Ignore, I am only going to uninstall** and press **Next** (you won't uninstall, but will check if the components are installed).
 - c. On the Component Selection window, verify that **Required Programs** is selected.
 - d. Expand the iSeries Navigator node to verify that the **Basic Operations and Commands** components are listed and selected.
 - e. Expand the Data Access node and verify that **OLE DB Provider** is listed and selected.
- A System i defined in iSeries Navigator.

This is sometimes an issue for people who don't typically use Client Access as their emulator. If you start iSeries Navigator, you should see your System i under My Connections. To check, go to: **Start\Programs\IBM iSeries Access for Windows\iSeries Navigator\My Connections.**

- Microsoft .NET 3.5 or higher.

or

- Windows 10/11 with:
 - IBM Access Client Solutions (ACS) Windows Application Package with the following installed components:

- Required Programs.
- OLE DB Provider (an option under Data Access).

To verify these components are installed, go to: Windows Settings\Apps and features OR Control Panel Programs and features. Find IBM i Access Client Solutions – Application Package and click on Change or Modify. Be patient as it can take the Install Shield wizard quite a while to open. Make sure the OLE DB Provider does not have a red x indicating it is not selected.

- A System i defined in iSeries Navigator.
- Microsoft .NET 3.5 or higher.

Viewpoint Excel Add-in

- Excel 2010 and greater (32-bit).
- Microsoft .NET 4.5 or higher is required for the ViewPoint Excel Add-in.

During install, a message will display if .NET is deficient. This will not halt nor harm the install process, and you should continue if prompted. .NET can be updated any time after the ViewPoint install and is available at:

<http://www.microsoft.com/en-us/download/details.aspx?id=30653>

or

<http://www.microsoft.com/en-us/download/details.aspx?id=17851>

or

<http://msdn.microsoft.com/en-us/library/5a4x27ek%28v=vs.110%29.aspx>

Installing ACS Windows Application Package

Viewpoint requires an IBM middle-ware component in order to connect to the IBM i host. Prior to Windows 10, **IBM's Client Access** product was typically used, but it is not supported on Windows 10 (or later). The newer **IBM Access Client Solutions (ACS)** software is the

replacement solution, however the base ACS software does not provide the necessary connectivity components needed for Viewpoint to connect you your IBM i host(s). Because the **ACS Windows Application Package** provides these connectivity components, it must be installed.

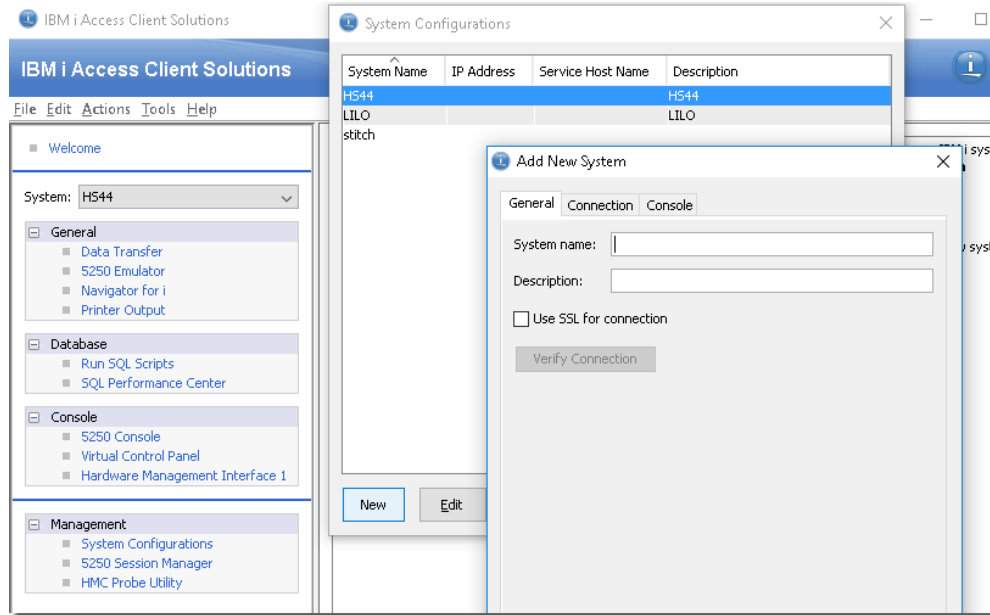
NOTE:

- It is possible to install the ACS Windows Application Package without the base ACS software, but most users will need to install both, especially if 5250 connectivity (i.e. 'green screen') is required.
- ACS Windows Application Package cannot exist along with Client Access. If installed Client Access must be removed before installing ACS.

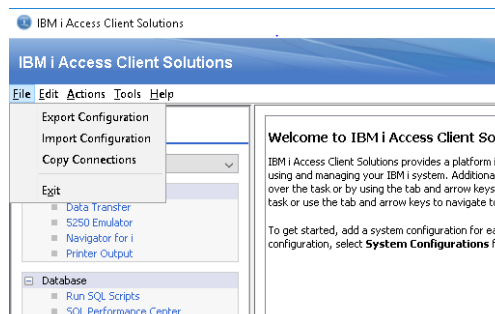
Steps

1. Download the IBM ACS Windows Application Package (and optionally the base ACS software too) from the IBM website (<https://www.ibm.com/support/pages/ibm-i-access-client-solutions>).
- Contact IBM or your IBM reseller if you are having trouble finding and downloading this software.
2. Locate the file downloaded above and double-click to start the install. Follow any on-screen instructions. Remember the IBM ACS Windows Application Package is required, and the base ACS software is optional.
3. Once Installed, the next step is to define the connections to your IBM i system(s). If you installed the base ACS software skip to Step 5 below.
4. If you **did not** install the base ACS software:
 - a. Start a DOS Command Window.
 - b. To create a definition, run a command similar to:
cwbcfg /r /host <<IBMiName>> /ipaddr <<198.xxx.xx.xxx>> /uid <<MyUserProfile>>
where:
<<IBMiName>> is the name of your IBM i host machine.
<<198.xxx.xx.xxx>> is the IP address of your IBM i host machine.
<<MyUserProfile>> is your IBM i user name.
5. If you **did** install the base ACS software, start ACS, and in the Management panel, click on **System Configurations**, or select **Actions\Management\System Configurations** from the menu.

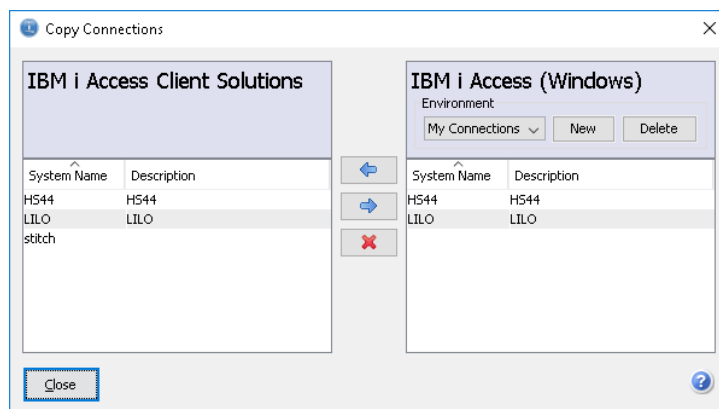
- a. Click **New** to add a new system. This part works much like Client Access.



- b. Once your systems are defined, close the System Configurations dialog, and select **File\Copy Connections** from the menu.



- c. In the Copy Connections dialog, you can copy host information from ACS to the Windows Application Package and vice versa. You can also use this panel to remove unwanted connections from either.



- d. Close this dialog when finished.

Installing Viewpoint

You must have Sequel installed and authorized for Viewpoint on your IBM i before you can use Viewpoint. The Viewpoint program on the PC does not need an authorization code.

Steps

1. You must download the software from the **Downloads** (<https://community.helpsystems.com/products-and-downloads/downloads/>) page on our website to install a new version, or update your current version of Viewpoint.

NOTE:

For trial installs: Be sure to select and download the Crystal Reports 2011 zip file (.zip).

2a. For First-time/Trial Installs:

- a1. Sign on as an Administrator to the PC, extract the Crystal Reports 2011 zip file to a work folder, and run the **setup.exe** file located in the **DATA_UNITS\CrystalReports** folder. Only do this for users who will be designing Client Reports.

For non-Client Report designers, skip to a3 to install Viewpoint.

- a2. Follow the on-screen instructions to complete the Crystal Reports installation.

NOTE:

Crystal Reports must be installed before Viewpoint. Also, you will be prompted to enter a Product Keycode to complete the Crystal Reports installation. Contact your sales representative to obtain your keycode before you install.

- a3. Locate the Viewpoint setup file (**ViewPoint11_Setup.exe**) downloaded from the HelpSystems Web Site.
- a4. Sign on as an Administrator to the PC, and run (double-click) the Viewpoint setup file to start the Viewpoint Installation Wizard.
- a5. When prompted to choose components, select the **Custom Install** option, and then check the **Client Report Option** feature.
- a6. Under the Custom Install, **Excel Add-in** and **Administrator** can also be selected to install.
- a7. Follow the remaining on-screen instructions to complete the Viewpoint installation.

2b. For Upgrades:

- b1. Locate the Viewpoint setup file (**ViewPoint11_Setup.exe**) downloaded from the HelpSystems Web Site.
- b2. Sign on as an Administrator to the PC, and run (double-click) the Viewpoint setup file to start the Viewpoint Installation Wizard.
- b3. Follow the on-screen instructions to complete the Viewpoint installation.

NOTE:

If you select the Administrator component, you will be prompted to provide a password. Contact a support representative to obtain the password before you install.

Viewpoint Dependency with Sequel

Viewpoint and Sequel require compatible versions to work together properly. Occasionally, a new version of Viewpoint requires that you upgrade your Sequel software to maintain compatibility.

After You Are Done

The installation process installed the following objects:

- The SEQUEL product library (you might have specified an alternate library name)
- The SEQUELWI product library (you might have specified an alternate library name)
- The SEQUEL_TMP library used for Viewpoint and SWI processes. (created with *PUBLIC authority of *CHANGE)
- The ESEND email support library (you might have specified an alternate library name)
- The SEQUELEX library containing sample files, views, and reports
- The SEQUELEX2 library containing sample files, views, and reports for use with SERVER (*LOCALSYS) SYNTAX(*SERVER)
- The BI_COMMON library
- The Automate Schedule SKYAGENT library (if installed with the Unified Server)
- The ASCSUPPORT customer support library (where applicable)
- The SEQUELREPO versioning library
- SEQUELWI, and ESEND commands in QUSRSYS.
- A Sequel Java Server: required for null capable variable support in SERVER(*LOCALSYS) SYNTAX(*SERVER) views and running of Client Reports.

- An Apache server with the same name as the SWI product library (SEQUELWI by default) is created, and configured to use port 400, or the next port in succession if unavailable. If a server exists with the same name as the specified product library it will not be overwritten.
- The initial library list of the job description QZHBHTTP in library QHTTPSVR is modified to include the libraries QGPL, QTEMP, SEQUELWI, SEQUEL and ESEND.
- IFS files: Operations Navigator ESEND plug-in:
QIBM\UserData\OpNavPlugin\ASC.ESEND
- Additional files are installed in the folders \sequel, \esend, \helpsystems, \skyagent and \rio.
- /SEQUEL/swi IFS directories for the image and icon files used in the standard Web pages created by the SEQUEL Web Interface.
- The Viewpoint Repository (/SEQUEL/swi/repository/*) in the IFS.
- Three libraries were restored to your system for use during the installation or update process: HSLOADMGR, HSLOADMGRW, and RBTCDRLIB. We don't remove them from your system in case you're doing multiple installations. You can delete them when you're finished.

NOTE:

You can move the library HSLOADMGR to a different system on the IBM i and use it to complete additional installs or updates. For more information, see [Using the HelpSystems Product Loader](#) on our website.